

Home Ownership Preservation

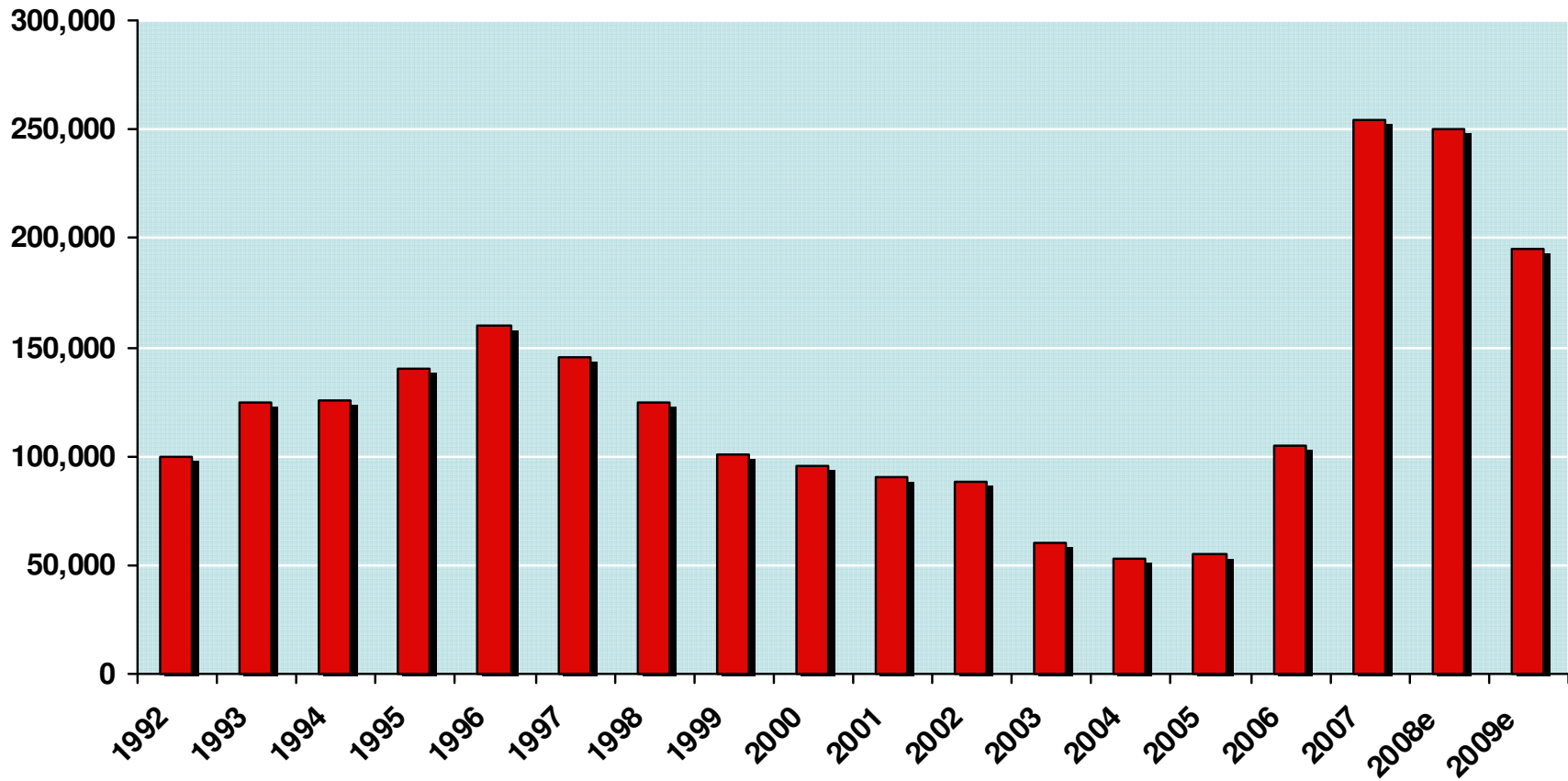
March 7, 2008

PolicyLink Conference

California Reinvestment Coalition

Record California Foreclosure Activity

California Default Notices

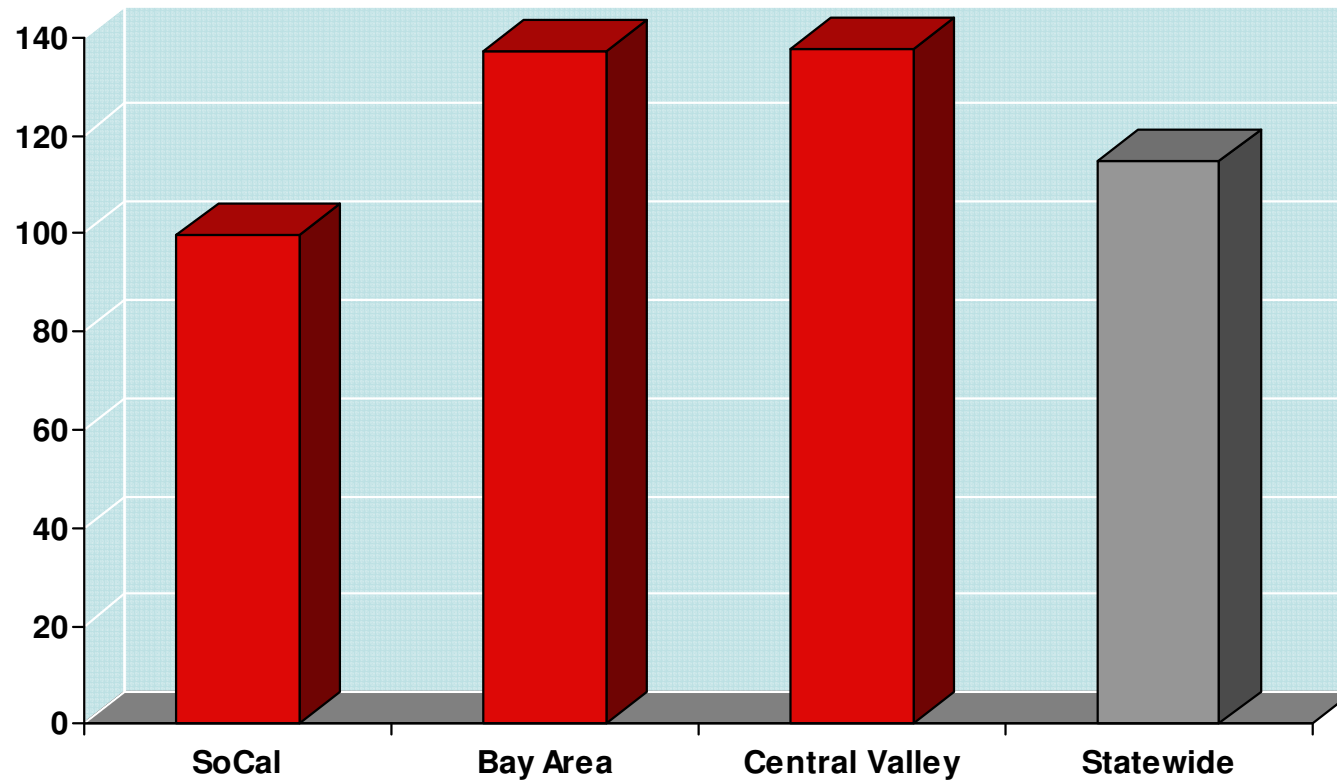


Source: DataQuick Information Systems

Regional & Local Default Activity

Regional Default Trends

Percentage change in rates
(Q4 2006-Q4 2007)

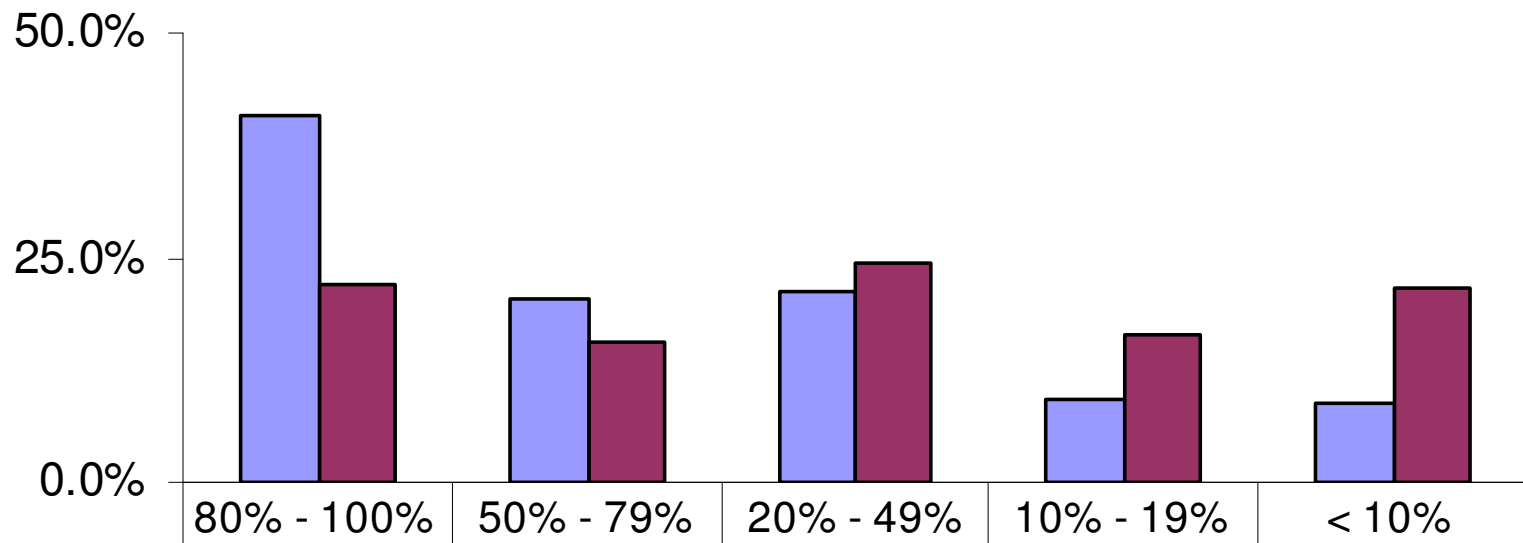


California Cities in Top 5 for Foreclosure Rates in U.S.

- 1 Merced
- 2 Modesto
- 3 Stockton
- 4 Riverside

Source: RealtyTrac data through December 2007

Chart 2. Distribution of Loans by Neighborhood Minority Composition in Study MSAs, 2006



■ High-Risk Lenders	40.8%	20.2%	21.0%	9.1%	8.9%
■ All Lenders	22.2%	15.4%	24.3%	16.3%	21.8%

Source: Table 1

Foreclosures by State

*Properties entering the foreclosure process in January 2008 from notice of default to repossession.



As Home Sales Sag, Foreclosures Soar

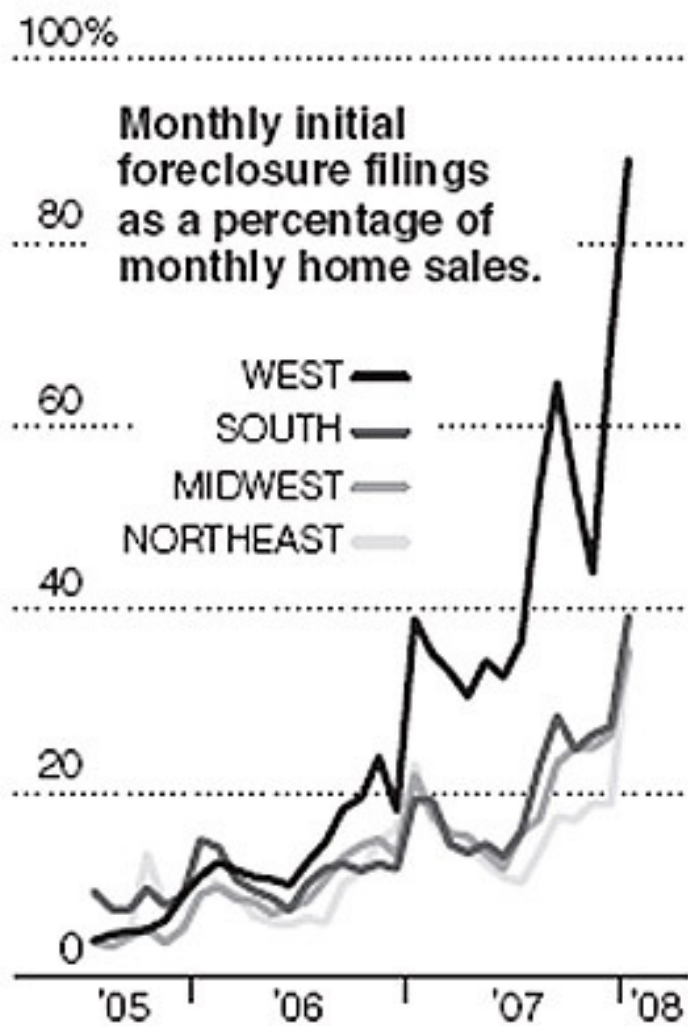
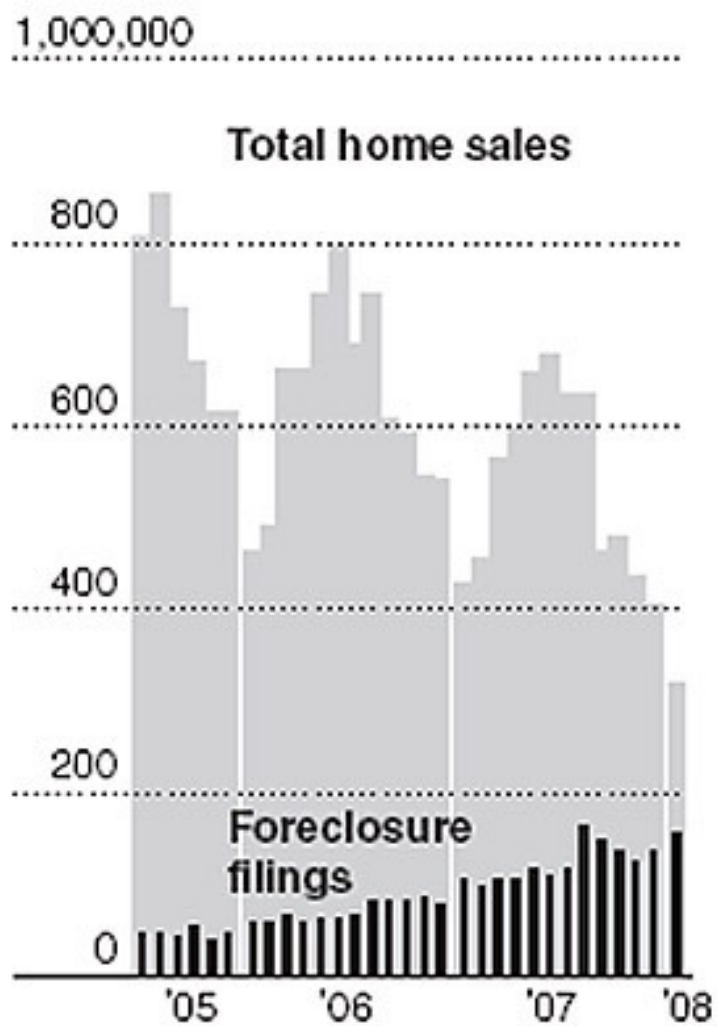
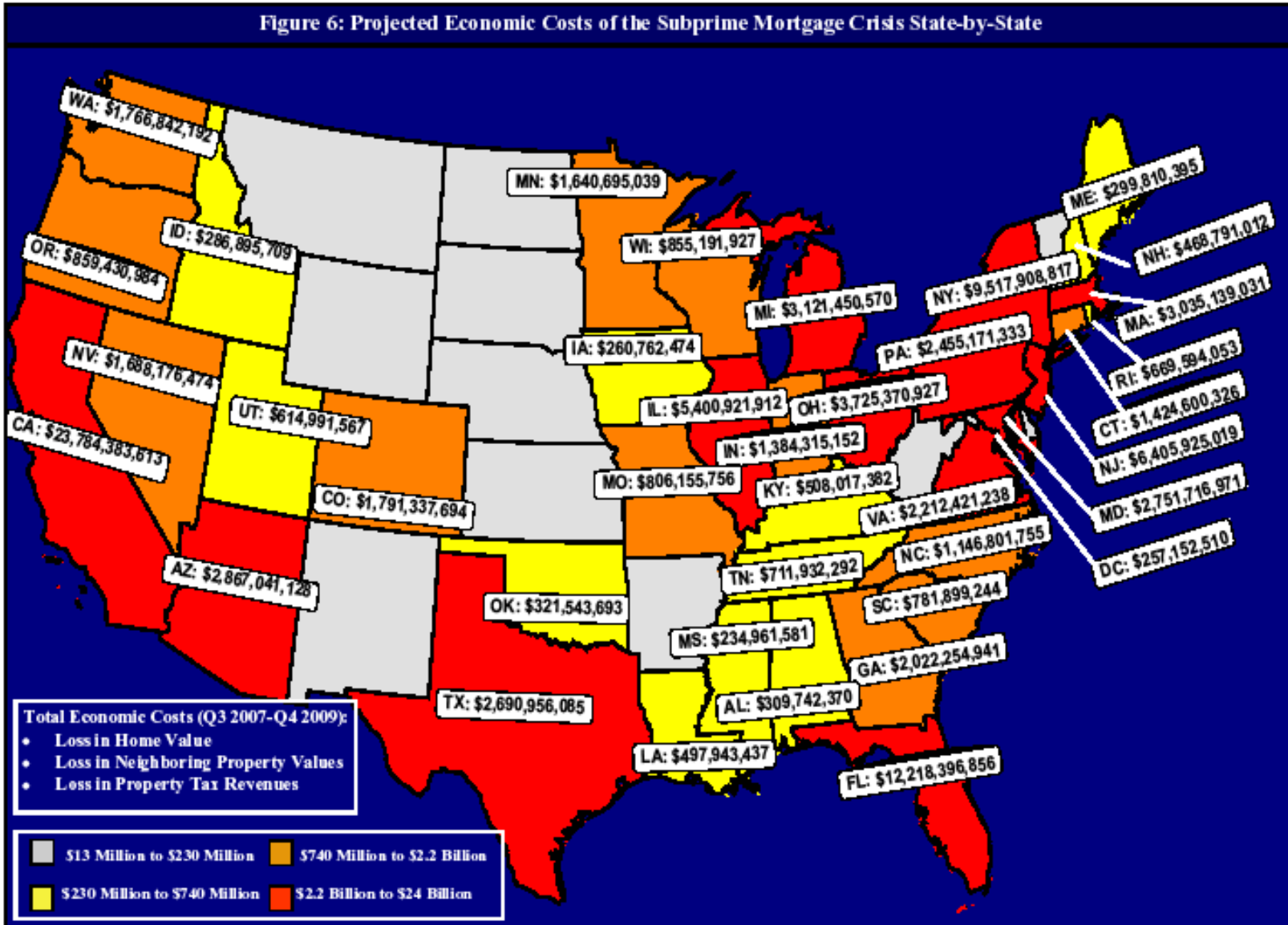


Figure 6: Projected Economic Costs of the Subprime Mortgage Crisis State-by-State

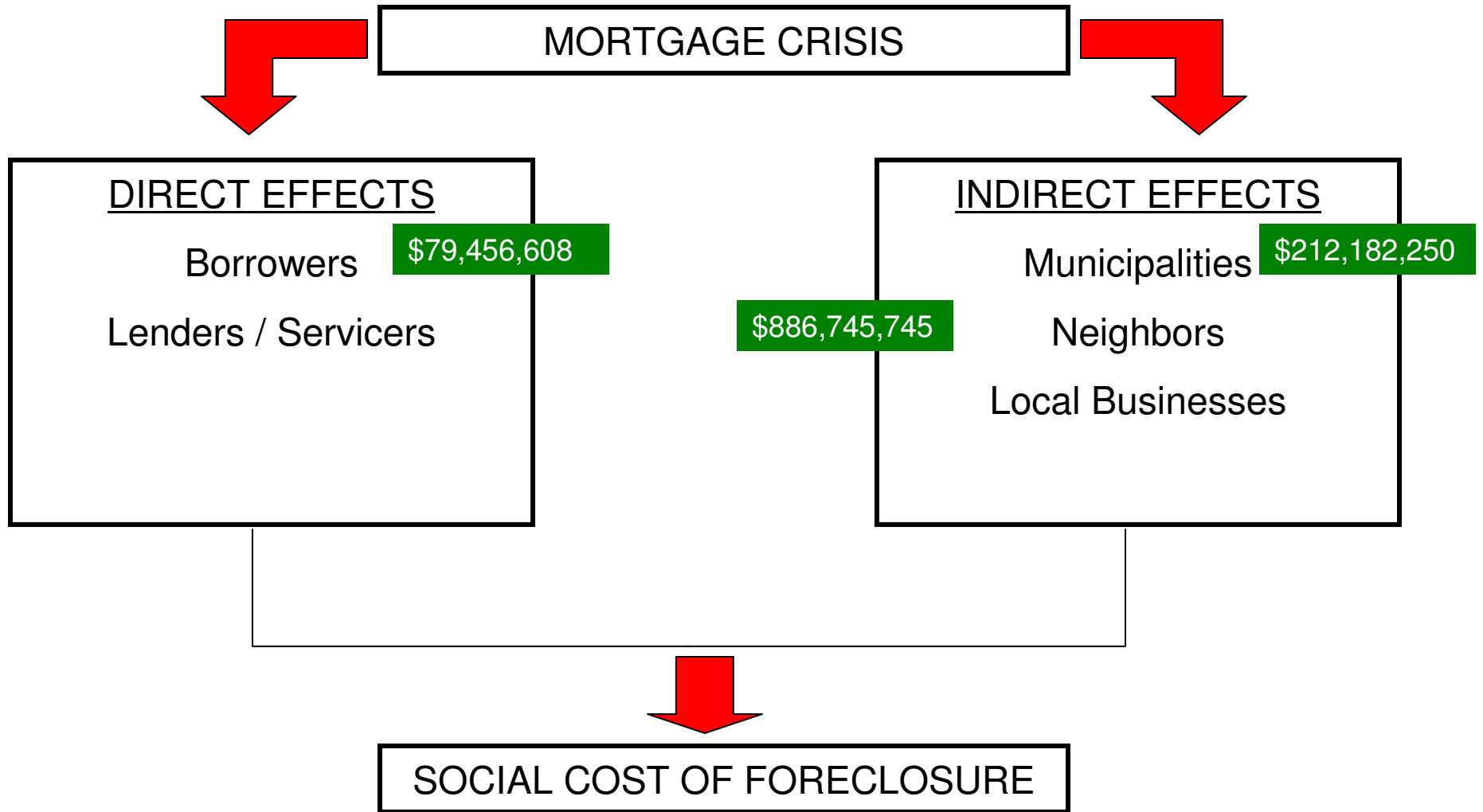


Source: JEC Calculations.

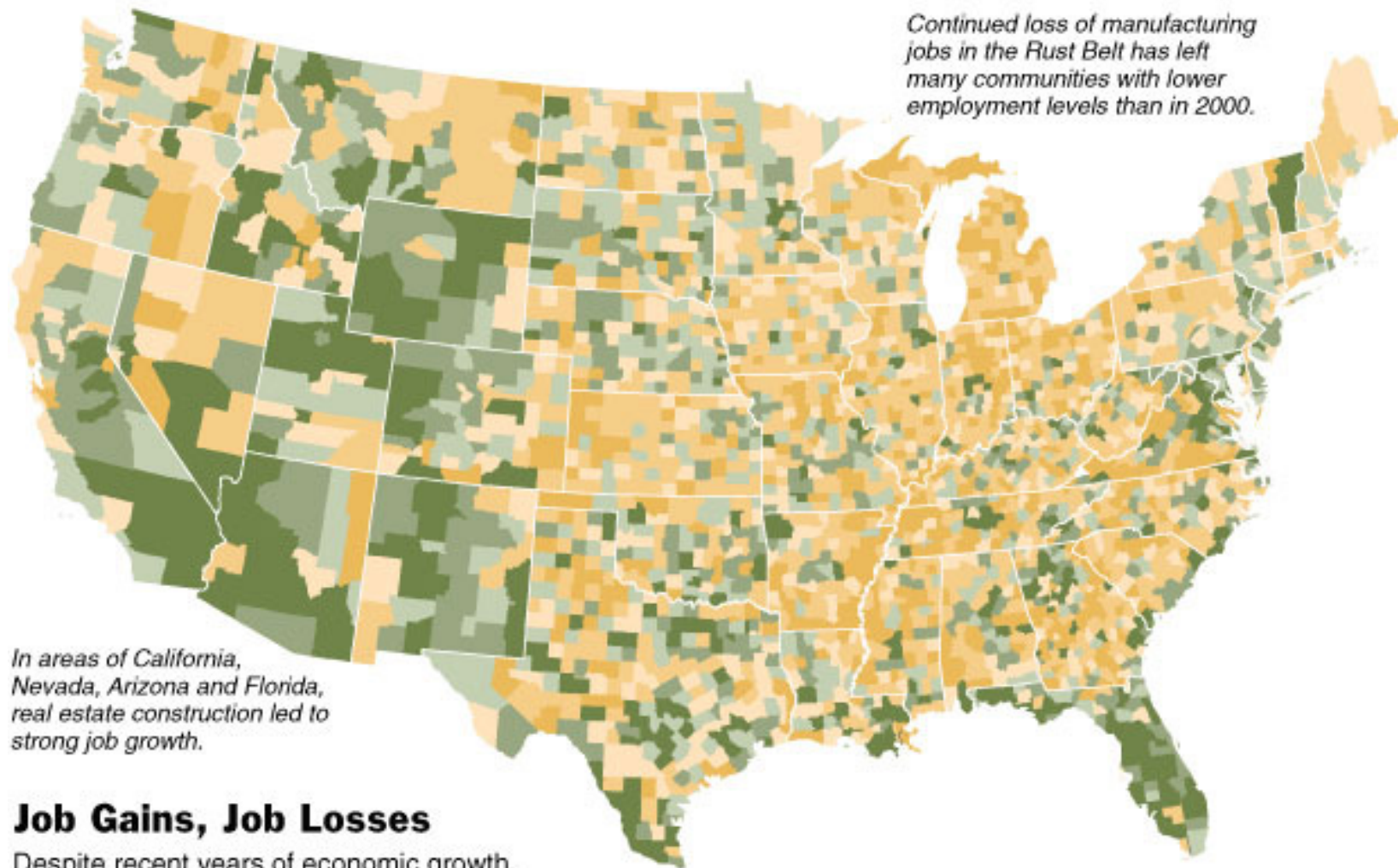
Key Mortgage Crisis Solutions

- Loan Mitigation
- Mortgage Counseling
- Funds for Repossessed Properties
- Rescue Loan Fund
- Strong Lender Regulation

Social & Economic Impacts of Foreclosure in LA



Sources: Apgar, William & Duda, Mark, *Collateral Damage: The Municipal Impact of Today's Mortgage Foreclosure Boom*, 2005 & ACORN, *The Cost to Our Cities and Neighborhoods: Report for Los Angeles-Long Beach-Glendale*, October 2007.



Continued loss of manufacturing jobs in the Rust Belt has left many communities with lower employment levels than in 2000.

In areas of California, Nevada, Arizona and Florida, real estate construction led to strong job growth.

Job Gains, Job Losses

Despite recent years of economic growth, employment in many areas remains lower than it was in 2000, during the technology boom. The current employment decline has affected all population groups, but some, like black women, may be especially vulnerable.

Change in employment from 2000 to 2007, by county



Sources: Bureau of Labor Statistics; Moody's Economy.com

2007 county data is an estimate; data does not include self-employed workers.