

COMMUNITY PARTNERSHIP FOR THE HOMELESS

Lens of Opportunity:

Seeing Beyond
Partisanship to
Racial Justice

March 7, 2008



*building independence,
creating opportunities*



- Mapping initiative focused on how opportunity is distributed in Central Texas
- Opportunity in terms of housing, public health, public education, and economic mobility
- Launched in Summer 2006
- Initial Phase I Findings: Low opportunity neighborhood areas concentrated east of I-35

Map 2: Comprehensive Opportunity Map, City of Austin

KIRWAN
INSTITUTE

This map displays the spatial pattern of distribution of opportunity in City of Austin based on Economic, Mobility, Education, Public Health and Neighborhood Indicators.

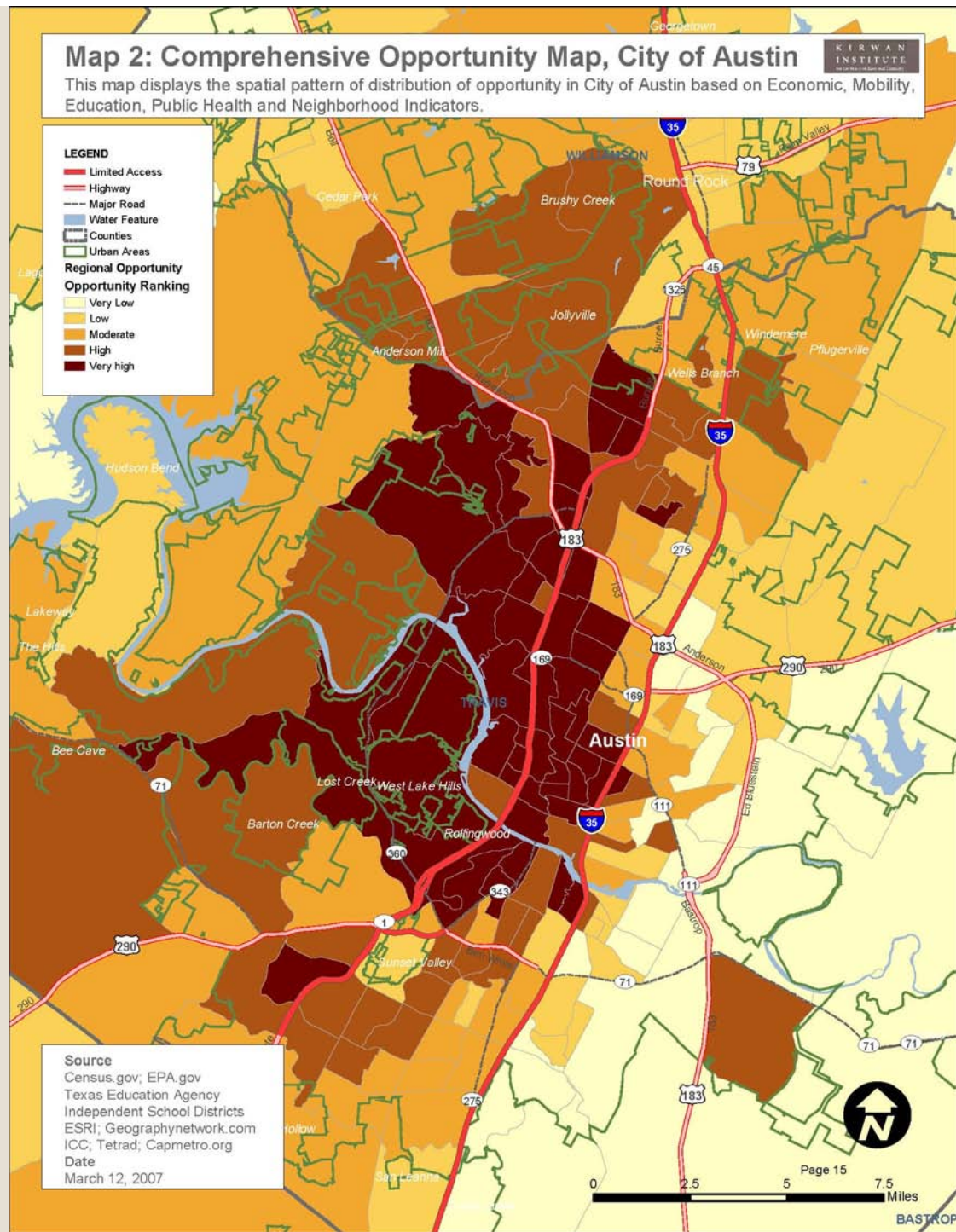
LEGEND

- Limited Access
- Highway
- Major Road
- Water Feature
- Counties
- Urban Areas

Regional Opportunity

Opportunity Ranking

- Very Low
- Low
- Moderate
- High
- Very high



Source
Census.gov; EPA.gov
Texas Education Agency
Independent School Districts
ESRI; Geographynetwork.com
ICC; Tetrad; Capmetro.org
Date
March 12, 2007

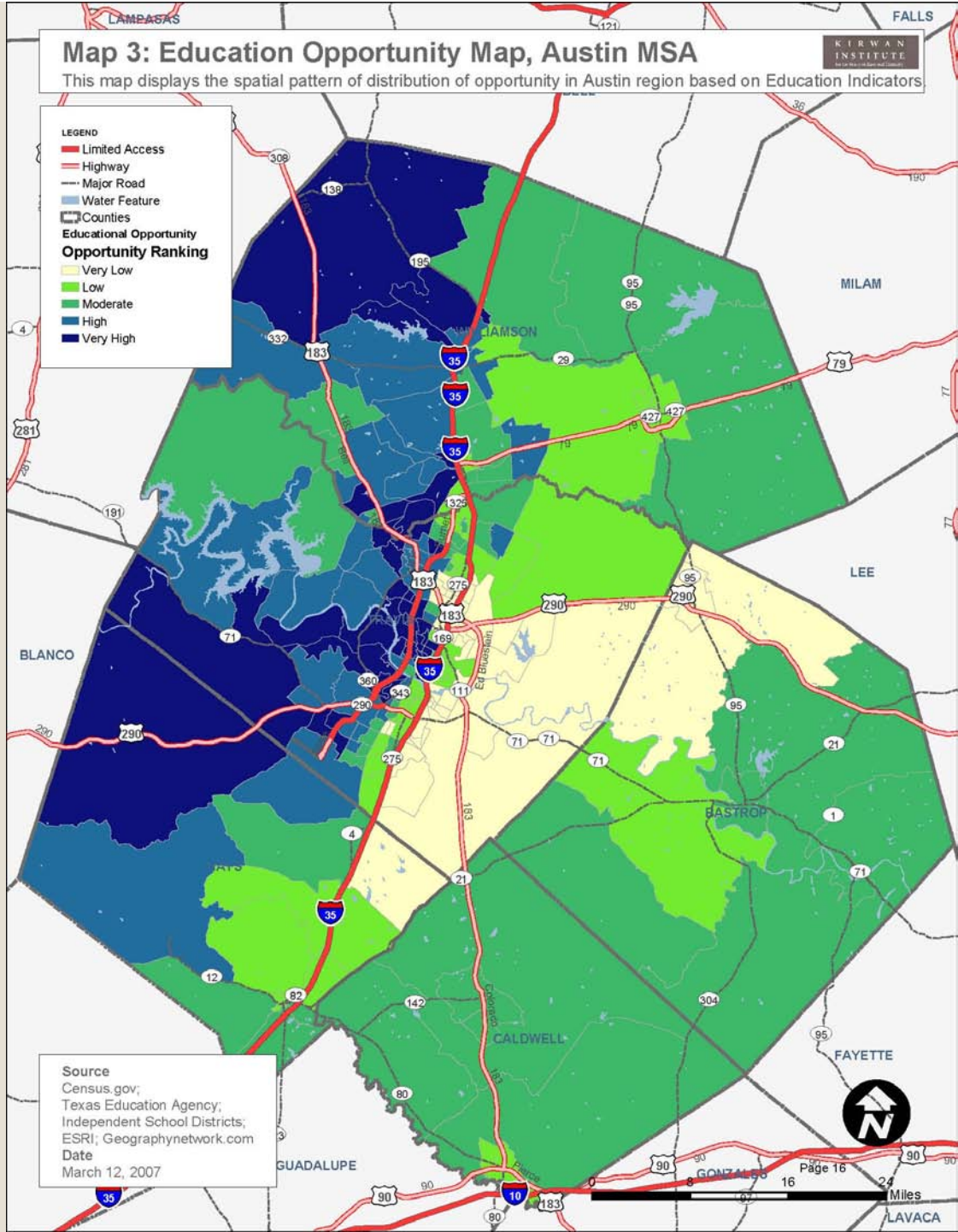
Map 3: Education Opportunity Map, Austin MSA

This map displays the spatial pattern of distribution of opportunity in Austin region based on Education Indicators

KIRWAN
INSTITUTE
for the Study of Education

LEGEND

- Limited Access
- Highway
- Major Road
- Water Feature
- Counties
- Educational Opportunity**
- Opportunity Ranking**
- Very Low
- Low
- Moderate
- High
- Very High



Source
Census.gov;
Texas Education Agency;
Independent School Districts;
ESRI; Geographynetwork.com
Date
March 12, 2007

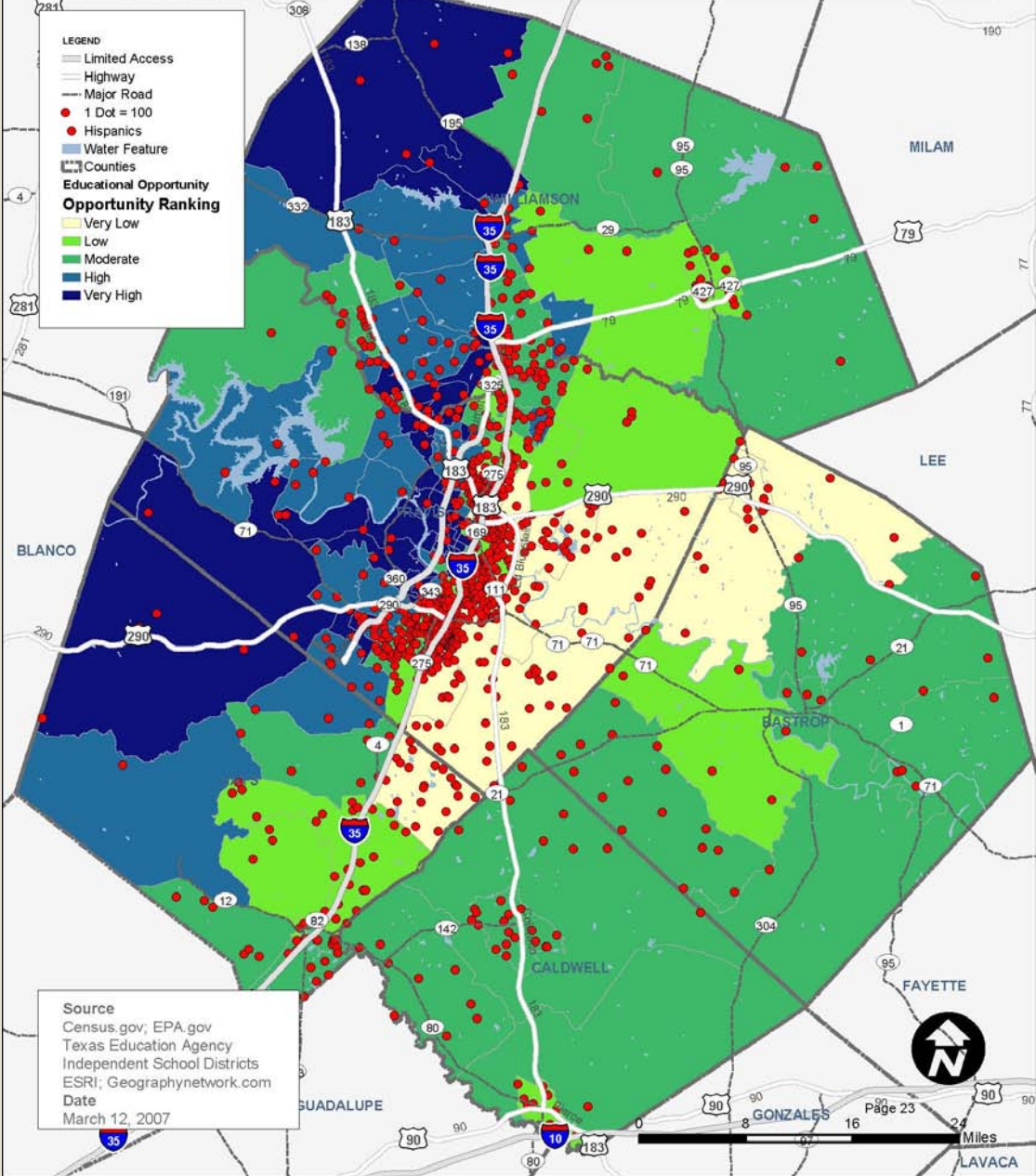


Page 16
16 Miles

Map 10A: Education Opportunity and Hispanic Children Austin MSA

KIRWAN
INSTITUTE
for the Study of Education

This map displays the spatial pattern of distribution of opportunity in Austin region based on Education Indicators overlaid with Hispanic child population in 2000.



Source
Census.gov; EPA.gov
Texas Education Agency
Independent School Districts
ESRI; Geographynetwork.com
Date
March 12, 2007

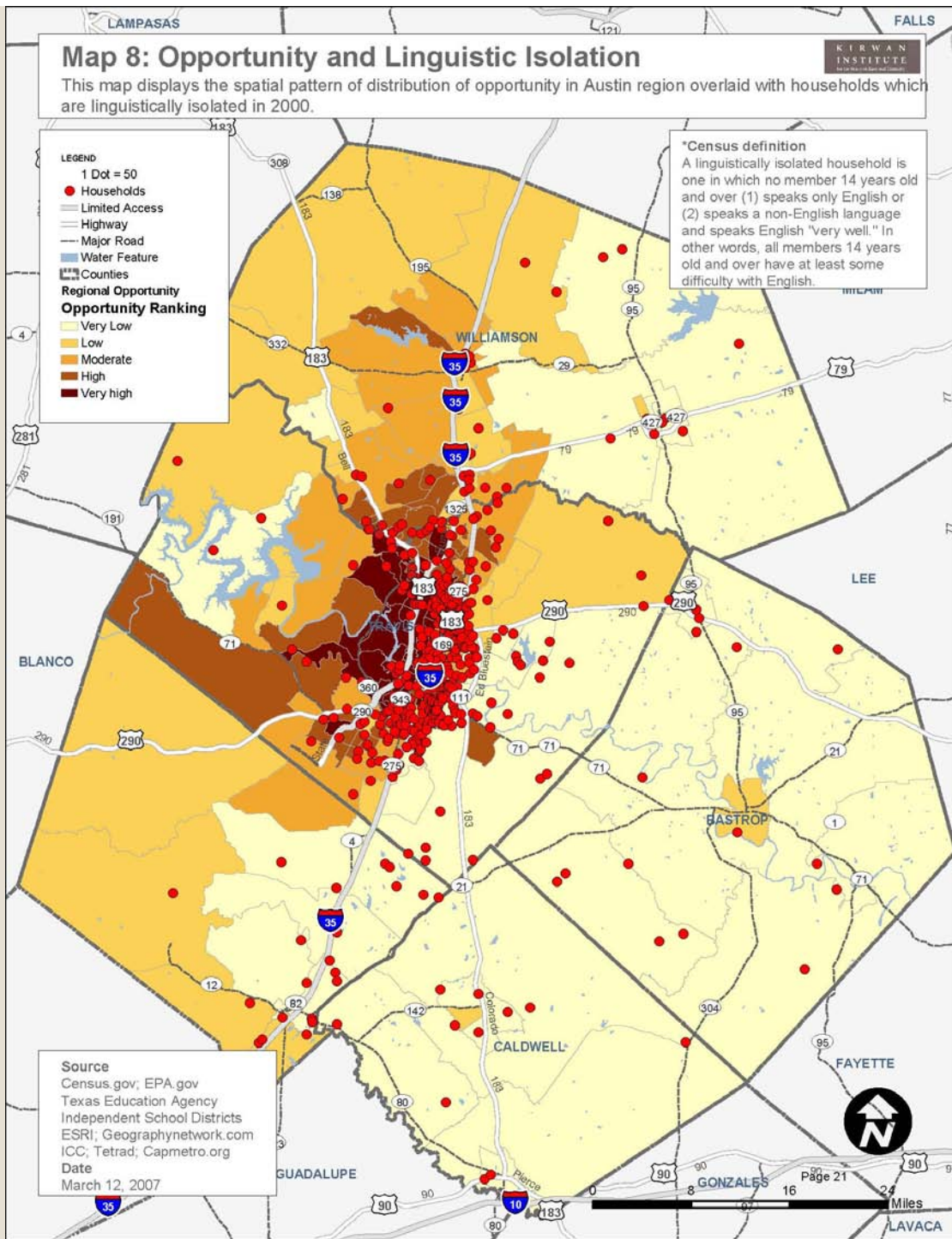
Map 8: Opportunity and Linguistic Isolation

This map displays the spatial pattern of distribution of opportunity in Austin region overlaid with households which are linguistically isolated in 2000.

KIRWAN
INSTITUTE
FOR POLICY AND RESEARCH

- LEGEND**
- 1 Dot = 50 Households
 - Limited Access
 - Highway
 - Major Road
 - Water Feature
 - Counties
 - Regional Opportunity Opportunity Ranking**
 - Very Low
 - Low
 - Moderate
 - High
 - Very high

***Census definition**
A linguistically isolated household is one in which no member 14 years old and over (1) speaks only English or (2) speaks a non-English language and speaks English "very well." In other words, all members 14 years old and over have at least some difficulty with English.



Source
 Census.gov; EPA.gov
 Texas Education Agency
 Independent School Districts
 ESRI; Geographynetwork.com
 ICC, Tetrad; Capmetro.org
Date
 March 12, 2007

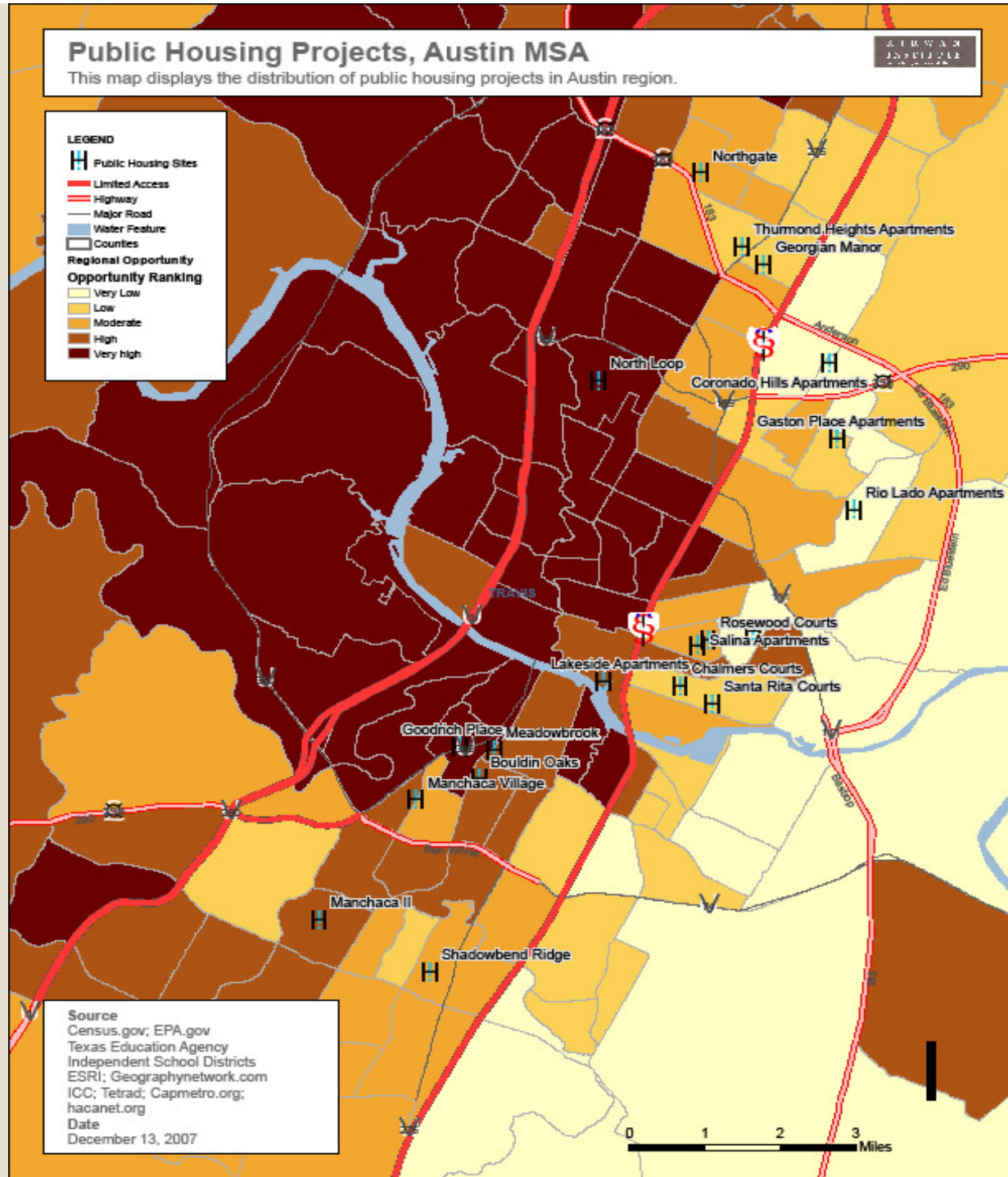
Public Housing Projects, Austin MSA

This map displays the distribution of public housing projects in Austin region.

STRUBEN
INSTITUTE
FOR
POLICY

LEGEND

- Public Housing Sites
- Limited Access
- Highway
- Major Road
- Water Feature
- Counties
- Regional Opportunity
- Opportunity Ranking
 - Very Low
 - Low
 - Moderate
 - High
 - Very high



Source
Census.gov; EPA.gov
Texas Education Agency
Independent School Districts
ESRI; Geographynetwork.com
ICC; Tetrad; Capmetro.org;
hacanet.org
Date
December 13, 2007

0 1 2 3 Miles